



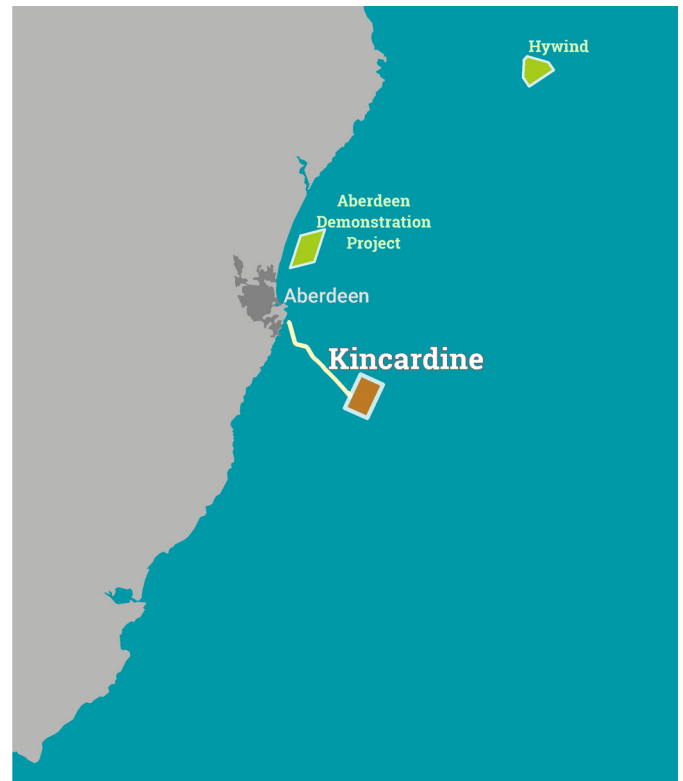
Kingfisher Wind farms chart

seafish
Kingfisher
Information Service

Kincardine offshore wind farm
January 2019

Description

The Kincardine Offshore Wind Farm is operated by Pilot Offshore Renewables Ltd. It is situated approximately 17 km from shore in the Northern North Sea, off the Aberdeenshire coast. The wind farm will comprise 7 turbines, a total capacity of 50 MW and cover an area of approximately 24 km².



Emergency procedures

1. If you suspect you have snagged a subsea cable or renewable energy structure, DO NOT endanger your vessel and crew by attempting to recover your gear.
2. Carefully plot your vessel's position as accurately as possible.
3. Advise the Coastguard of your situation, and call the 24 hour Emergency Number and state that an incident is occurring concerning a subsea cable or renewable energy structure.

Reducing the risks whilst fishing




To reduce the risks of fishing near offshore structures, it is essential to be up to date with KIS-ORCA information. KIS-ORCA information is easy to install on your vessel's fishing plotter and ensures skippers are able to make informed decisions for their safety.

The closer to the surface a subsea cable is lifted when fouled by fishing gear, the more danger there is to the fishing vessel. In the interests of fishing safety and to prevent damage to subsea structures, fishermen are advised to exercise caution when fishing in the vicinity of subsea cables and renewable energy structures. Loss of gear, fishing time and catch can result if a trawler snags a subsea structure and there is serious risk of loss of life.

Emergency contact number +44(0)7928 484343

Pilot Offshore
Renewables Ltd

**Kincardine
Offshore Wind Farm**

- Key**
-  Site boundary
 -  Export cable
 -  Wind turbine

Grey coloured features displayed on this chart represent additional offshore wind farm structures. Visit www.kis-orca.eu/map for more info.

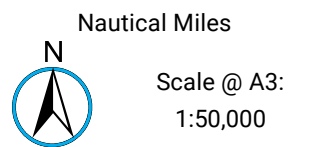
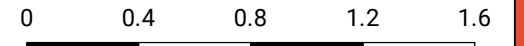


Projection: WGS_1984_UTM_Zone_30N
Spheroid: GCS_WGS_1984
Datum: D_WGS_1984

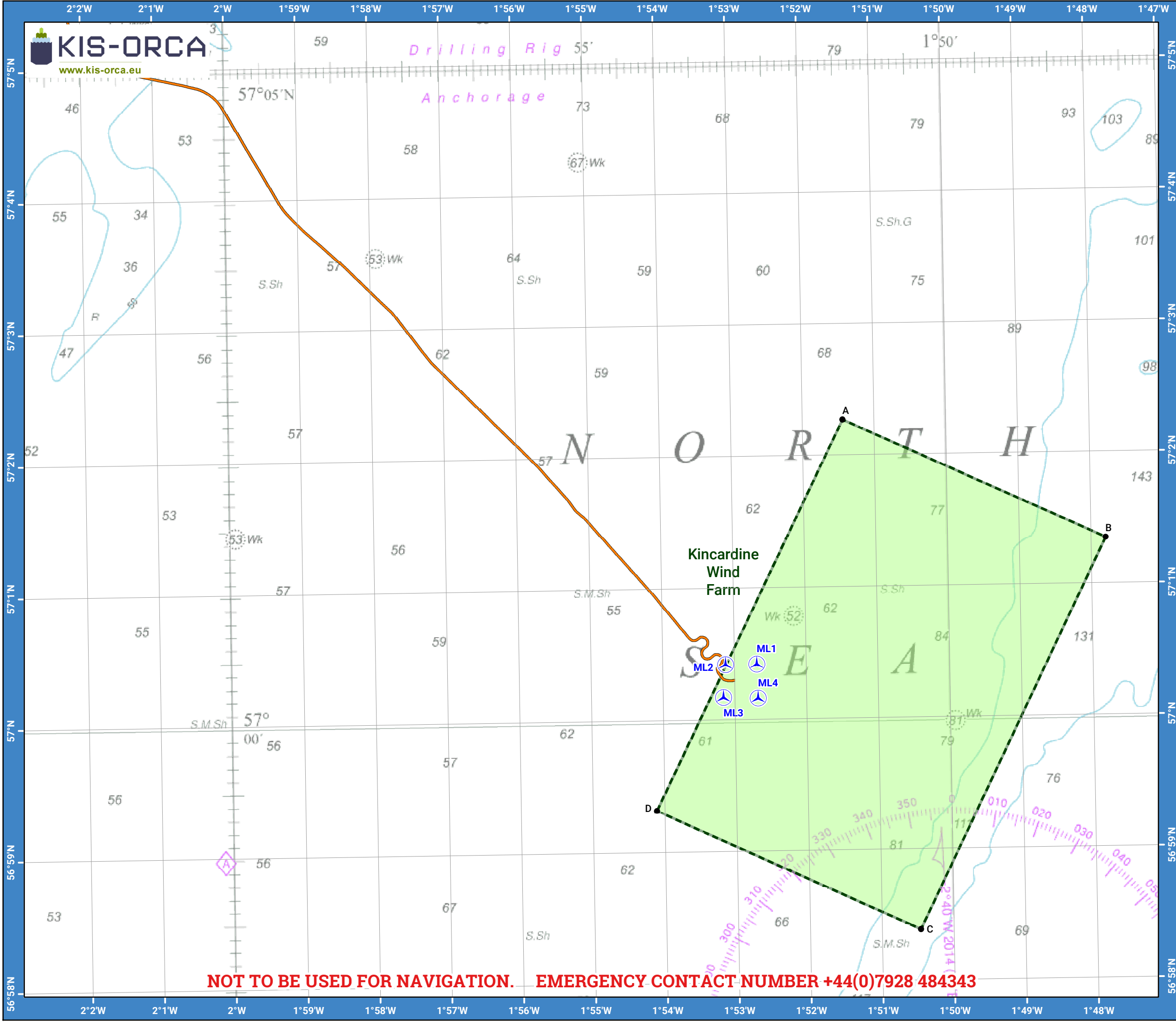
This data is issued as a guide only. Seafish, cable / structure owners and Distributors accept no responsibility for any inaccuracies however caused.

Please be aware that other structures & cables may exist in addition to those shown on this chart.

©Crown Copyright and/or database rights. Reproduced by permission of the Controller of Her Majesty's Stationery Office and the UK Hydrographic Office (www.GOV.uk/UKHO).



NOT TO BE USED FOR NAVIGATION. EMERGENCY CONTACT NUMBER +44(0)7928 484343



Asset locations

Extents

A	57°02.272'N 01°51.441'W
B	57°01.348'N 01°47.799'W
C	56°58.390'N 01°50.463'W
D	56°59.320'N 01°54.112'W

Turbines

ML1	57°00.424'N 01°52.689'W
ML2	57°00.424'N 01°53.125'W
ML3	57°00.174'N 01°53.161'W
ML4	57°00.165'N 01°52.678'W

Contact us